



# GMT MONTHLY MEMBERSHIP PROGRESS REPORT

Results as of: 6/30/2018

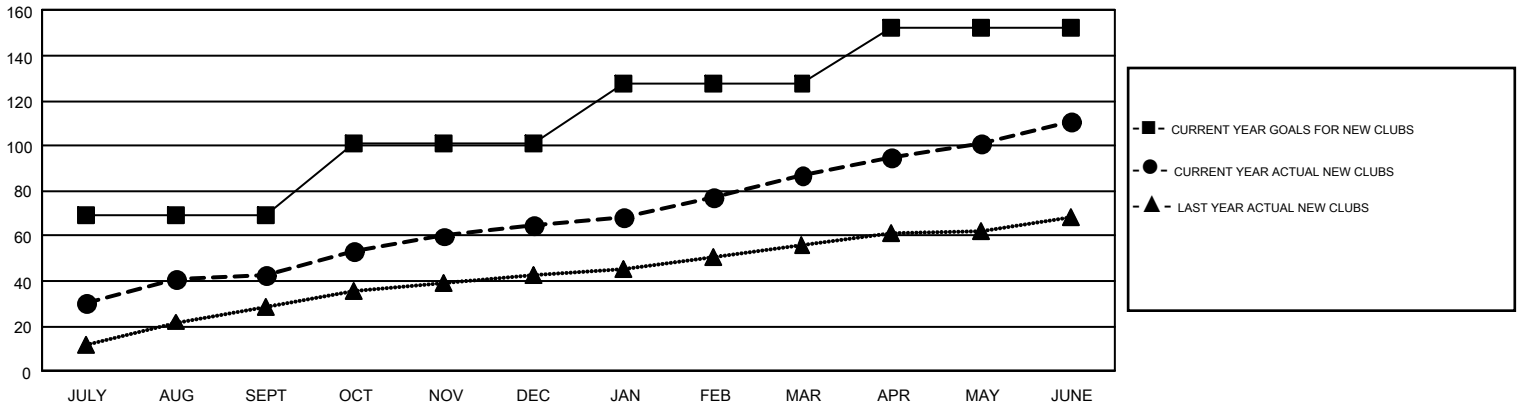
## GMT Constitutional Area 6, Group G

GMT: ANIL TULSYAN

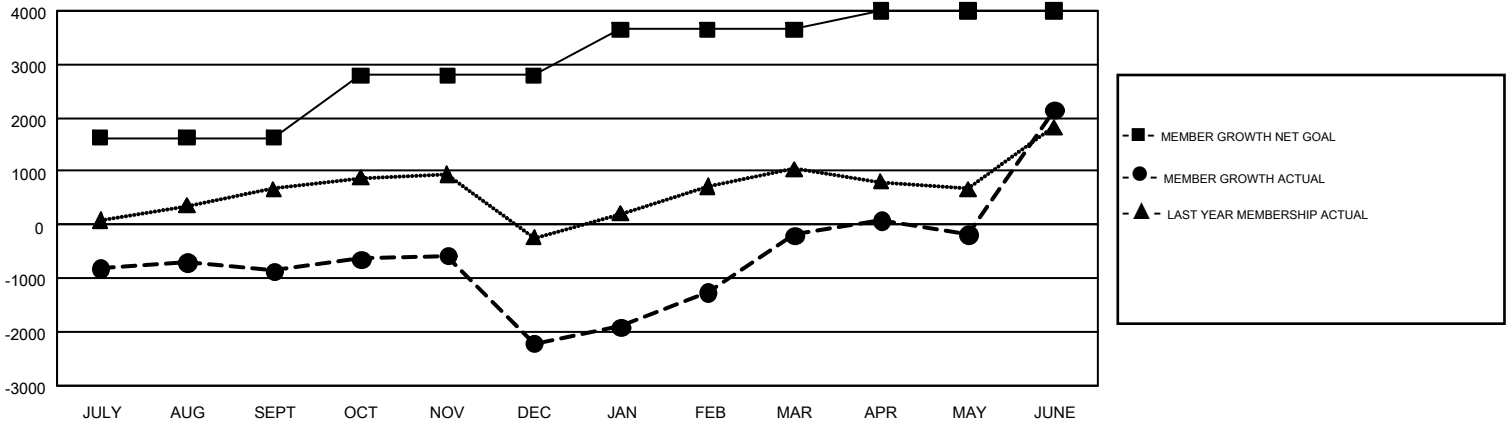
REPORT DOES NOT INCLUDE CLUBS IN UNDISTRICTED AREAS.

Clubs				Members			
RESULTS FOR 2017-2018				RESULTS FOR 2017-2018			
QUARTER	NEW CLUB GOAL	NEW CLUBS	DROPPED CLUBS	QUARTER	MEMBER GROWTH NET GOAL	MEMBER GROWTH ACTUAL	DROPPED MEMBERS ACTUAL (including transfers)
JULY/AUG/SEPT	69	43	10	JULY/AUG/SEPT	1,630	1,992	2,671
OCT/NOV/DEC	32	22	73	OCT/NOV/DEC	1,165	1,410	2,648
JAN/FEB/MAR	27	22	5	JAN/FEB/MAR	860	3,875	1,204
APR/MAY/JUNE	24	24	24	APR/MAY/JUNE	345	8,358	5,631

GOALS AND ACTUAL NEW CLUBS CUMULATIVE



GOALS AND ACTUAL MEMBERS CUMULATIVE



DROPPED CLUBS: 112	1,171 CLUBS OF 1,629 ADDED 1 OR MORE NEW MEMBERS	<b>GENDER DISTRIBUTION</b> MALE                    39,404 (70.90%) FEMALE                   16,169 (29.10%)
<b>DROPPED MEMBERS</b> DECEASED                    153 CLUB CANCELLED            2,101 OTHER                         9,900 <hr/> TOTAL                         12,154	<a href="#">CLICK HERE FOR CUMULATIVE MEMBERSHIP DATA</a>	TOTAL FAMILY UNIT MEMBERS                    0 FAMILY MEMBERS PAYING HALF DUES                    0